

# VANDAL LIVING



University of Idaho  
Housing and Residence Life



# WELCOME

## To Housing and Residence Life

**Housing and Residence Life**



[uidaho.edu/housing](http://uidaho.edu/housing)

The **University of Idaho** strives to create a fun, safe and academically enriching environment for all Vandal residents.

From a student's first campus visit through graduation, the Housing and Residence Life staff, is invested in their Vandal experience. The Housing and Residence Life staff is always available to provide the support, guidance and resources students need to succeed at the University of Idaho.

The Housing and Residence Life staff works hard to ensure student on-campus living experiences are both safe and memorable.



# ME

## ence Life

Benefits to On-Campus Living _____	4
Things to Do _____	6
Freshman Students _____	8
Transfer Students _____	12
Where to Sleep _____	13
Graduate Students and Students with Families _____	22
Parking and Transportation Services _____	23
Where to Eat _____	24
Campus Services _____	26

**FUN**

**SAFE**

**ENRICHING**



# LIVING ON-CAMPUS

## *Experience the Benefits*

Research shows students living on-campus have greater social and academic success when compared with students who live off campus. On-campus students report more engagement with advisors and their faculty as well as higher-quality interactions with other students. This leads to better learning opportunities, and ultimately, higher levels of academic success. Other student benefits include:

- Roll out of bed and get to class in 10 minutes. Don't worry about finding a place to park. Our residence halls are minutes away from class, dining, the library, the Student Rec Center and the vibrant downtown of Moscow, Idaho.
- The University of Idaho makes the safety of its residents a top priority. We are staffed 24-hours a day and our trained professional staff members are always available.



- On-campus residents have a stronger connection to the campus community because they are living in the center of all the action. Residents interact with peers from other areas of the nation as well as from countries around the world.
- Residents are surrounded by university-wide support systems. These include academic, financial, physical health and mental health resources.
- On-campus residents are more likely to get involved in clubs, organizations and student government. These experiences provide leadership skills that are still relevant long after graduation and look great on a resume.
- Living in our residence halls is a fun experience and friendships formed during college often last a lifetime. Social and educational activities are regularly scheduled for residents to enjoy as they experience college life at the University of Idaho.

# THINGS TO DO

*There is so much to do on our Moscow campus, you won't want to miss it.*

The University of Idaho offers hundreds of fun activities, from camping, rafting and hiking to attending concerts, lectures and athletic events. The entertainment possibilities are endless.

**OUTDOOR PROGRAMS** The Outdoor Program is a service organization dedicated to providing the university community with education and resources for adventure-based, human-powered environmentally sound activities.

The Outdoor Program works to promote leadership and growth through outdoor experiences such as rafting, backpacking, snowshoeing, skiing and more. Visit the Outdoor Program's website at: [uidaho.edu/outdoorprogram](http://uidaho.edu/outdoorprogram)

**ATTEND UNIVERSITY TRADITIONS** Meet multiple generations of Vandals during Homecoming, attend the annual holiday tree-lighting ceremony or experience fantastic music at the celebrated Lionel Hampton Jazz Festival.

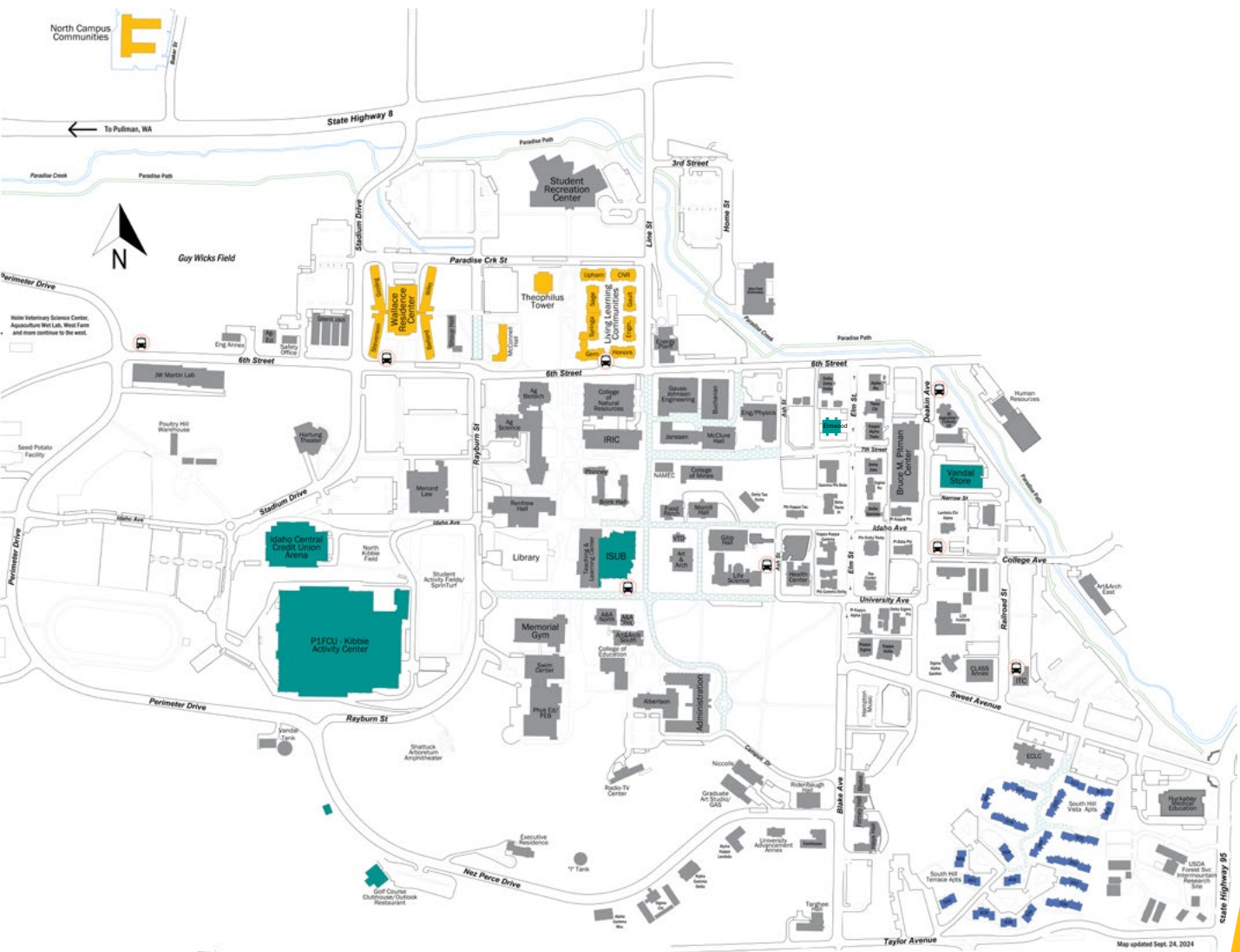
**SWIM** Jump into one of our two 25-yard NCAA competitive pools for lessons or laps.

**GOLF** Hit the links at the historic and scenic 18-hole Vandal Golf Course. The course offers sweeping views of the Palouse, a driving range and a variety of different lessons taught by a PGA professional.

**GO TO A CONCERT OR SHOW** There are endless on-campus opportunities to enjoy concerts, shows, plays, comedians and other special events. Our campus offers an incredible variety of venues, from the iconic P1FCU-Kibbie Dome and the intimate Hartung Theatre to elegant ballrooms and the stunning, state-of-the-art ICCU Arena.

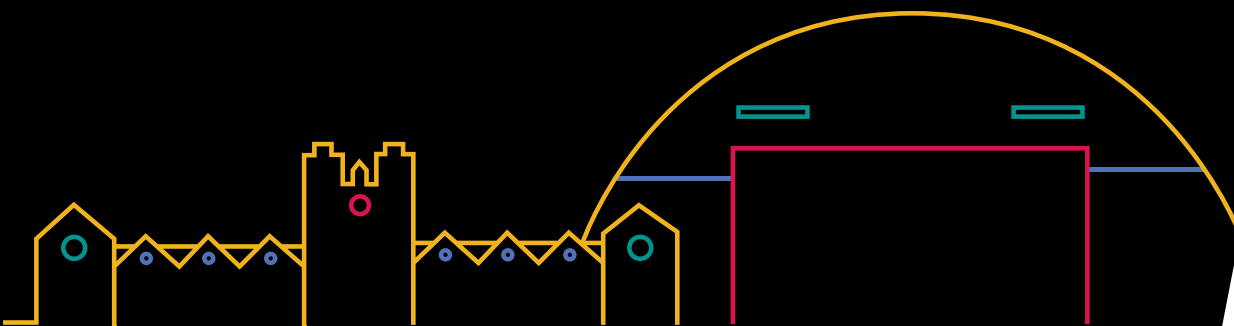
**ATTEND SPORTING EVENTS** Jump right into Vandal Athletics and catch a football game in the P1FCU-Kibbie Dome or a basketball game in our new ICCU Arena. Root on the Vandal teams across campus as they distinguish themselves in the competitive Big Sky Conference.





# EVERYTHING IN ONE PLACE

On-campus students can hang out with friends, find a quiet place to study or eat delicious food, all within a few minutes' walk of the residence halls.



# FRESHMAN STUDENTS

Welcome to Housing and Residence Life. Where a student eats, sleeps and studies plays a significant role in having a rewarding Vandal experience.

Freshman students are guaranteed space in university housing and have multiple options to choose from including the iconic Theophilus Tower, the Living Learning Community and the Wallace Residence Center. These areas are designed to enhance the Vandal experience at the University of Idaho by encouraging students to engage with one another, meet new friends and build community in a safe and comfortable environment

## First-Year Residential Requirement

The residential experience is an essential component of a student's social and academic success at the University of Idaho. With very few exceptions, all first-year students are required to live on-campus.

On-campus living provides unique resources and connections that help students create a successful and well-rounded college experience. Research has shown living in student housing during the first year has numerous academic and social benefits for students. In particular, students who live on the

university's Moscow campus during their first year typically experience the following benefits:

- Higher graduation rate than students who live off-campus
- An advanced level of satisfaction with their college experience
- A greater level of involvement in on-campus clubs and activities
- An enhanced level of interaction with faculty members and peers

More information about this requirement can be found on the University of Idaho web site:

## First-Year Residency Requirement



[go.uidaho.edu/requirement](https://go.uidaho.edu/requirement)





## MEAL PLAN REQUIREMENT

All first-year students living in the resident halls are required to have a meal plan. There are several different meal-plan options, so students can find something that works perfectly for their dietary preferences, budget and schedule. Learn more at: [uidaho.edu/dining](http://uidaho.edu/dining)

## Residence Life

### EVENTS AND ACTIVITIES

All students living on the U of I campus can expect a high-quality residential program which provides a fun, supportive and resourceful environment. It is our goal to create an environment where all students can live, learn and develop academic and social skills.

Every semester, residents participate in numerous events ranging from fun social, get-to-know-you activities, to programs and services designed to help students achieve academic success.

## Student and Professional Staff

Housing and Residence Life places a major emphasis on the care and wellbeing of all students. Both the professional staff and student staff are trained to support students who may be experiencing various challenges (e.g., mental health, academic).

## STUDENT STAFF

- Resident Assistants (RA) – RAs are student staff members who help mentor and guide their peers. RAs promote a safe and supportive living environment where residents can thrive.
- Program Coordinators (PC) – PCs create programming for students to engage with others on their floors and in their buildings.
- Academic Peer Mentors (APM) – APMs help students succeed by achieving their academic and personal goals through ongoing academic support and encouragement.

## PROFESSIONAL STAFF

- Resident Directors (RD) are student affairs professionals who live within the different on-campus communities to ensure the student experience is successful.
- Asst. Director of Leadership Development and Community Standards works with all student leadership within the residence halls, as well as overseeing conduct and community standards.
- Asst. Director for Residential Support oversees the Student Success Program.
- Conduct Coordinator is responsible for the coordination and administration of student conduct within the residence halls.



## Adjusting to College Life

College is an exciting time of life, one filled with many profound transitions and preparation for an exciting and fulfilling future. College provides opportunities for growth, new interests and rich interpersonal experiences. However, adjusting to campus living can present some challenges. Students may be living away from home for the first time, or sharing a room with someone they have not met. The Housing and Residence Life team makes this adjustment smoother with a wide array of academic, social and health resources.

## Community Service

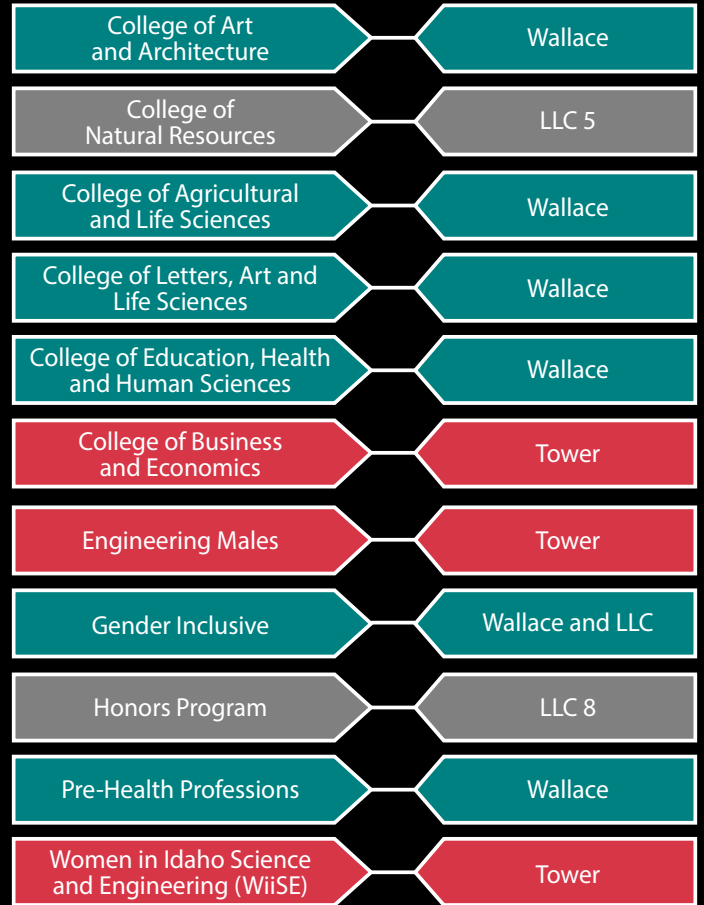
Giving back to the community is an important value for both the University of Idaho and Vandal students. On-campus residents have many opportunities to give back by participating in annual service events such as the popular Tower Trick-or-Treat which gives local families a safe place to Trick-or-Treat each year.

## Student Success Program

The Student Success Program provides academic resources specifically for students living in the residence halls. Located in in the basement of Wallace, the Student Success Program gives students the advantage of on-site peer mentoring, academic assistance and flexible study spaces.

## Specialized Communities

Housing and Residence Life offers students the opportunity to live in focused groups of students with the same academic or social interests.



[go.uidaho.edu/ssp](http://go.uidaho.edu/ssp)





## Student Employment Opportunities

All Vandal students have the opportunity to find suitable student employment with departments such as housing, dining, the university bookstore (VandalStore), custodial, summer conferences and even the Vandal Golf Course. A full listing of available jobs can be found on the university's website.

## Residence Hall Association (RHA)

The Residence Hall Association is a student group that strives to improve the resident experience through advocacy, involvement and leadership. With a governing area team for each residence hall, RHA provides many opportunities for levels of involvement and leadership.



RHA



[uidaho.edu/rha](http://uidaho.edu/rha)

# Transfer Students

Congratulations on transferring to the University of Idaho and living in the residence halls.

Incoming transfer students are in a unique position. Their Vandal experience will be similar to returning students in some respects, but they will also participate in similar orientation programs as traditional first-year students. To help smooth the transition to a new living space, transfer students have the opportunity to choose housing in the upper-level residence halls.

Through the housing application, students are able to choose their room and look for a roommate. Students fill out a personal interest form to assist with finding a great roommate match. Medical accommodations can be made through the Center for Disability Access and Resources.

## Specialized Communities

Transfer students have the opportunity to live with residents who share similar interests, such as:

- College of Natural Resources – LLC 5
- Engineering – LLC 7
- Gender-Inclusive – Wallace and LLC
- Honors Program – LLC 8

## Dining and Meals

All meal plans are available to transfer students, so there are plenty of options to meet students' dietary preferences, budgets, and scheduling needs.



# Housing

The University of Idaho provides **8 community options**, catering to students at all stages of their academic careers.

## Types of Residence Hall Living

SOMETHING FOR EVERYONE

A variety of housing options are available at the University of Idaho. The facilities offer traditional, suite and apartment style floor plans, as well as various specialized communities that provide living options to fit the needs of each resident.

	Theophilus Tower	Wallace	McConnell	LLC	NCC
<b>First-Year Students</b>	●	●		●	
<b>Non-First Year Students</b>			●	●	●
<b>Double Rooms</b>	●	●		●	●
<b>Single-Rooms</b>			●	●	●
<b>Suites</b>		●		●	
<b>Bathroom Style</b>	Community	Semi-Private	Community	Semi-Private	Semi-Private
<b>Floor Type</b>	Tile	Carpet	Carpet	Carpet	Laminate
<b>Co-Ed Floors</b>		●		●	●
<b>Single-Gender Floors</b>	●		●		
<b>Gender-Inclusive Living</b>		●		●	
<b>Academic Themes</b>	●	●		●	
<b>Mini-Fridge</b>	●	●	●		●
<b>Refrigerator</b>				●	
<b>Microwave</b>	●	●	●	●	●
<b>Community Kitchen</b>		●	●	●	
<b>Wifi</b>	Included	Included	Included	Included	Included
<b>Laundry</b>	Included	Included	Included	Included	Included
<b>Lounge</b>	●	●	●	●	
<b>Student Area</b>	●	●	●	●	●
<b>Computer Lab</b>	●	●	●		
<b>Number of Residents</b>	400	970	58	630	200
<b>Bed Size</b>	Twin XL	Twin XL	Twin XL	Twin XL	Twin XL
<b>Open during Winter Break</b>		Stevenson		●	

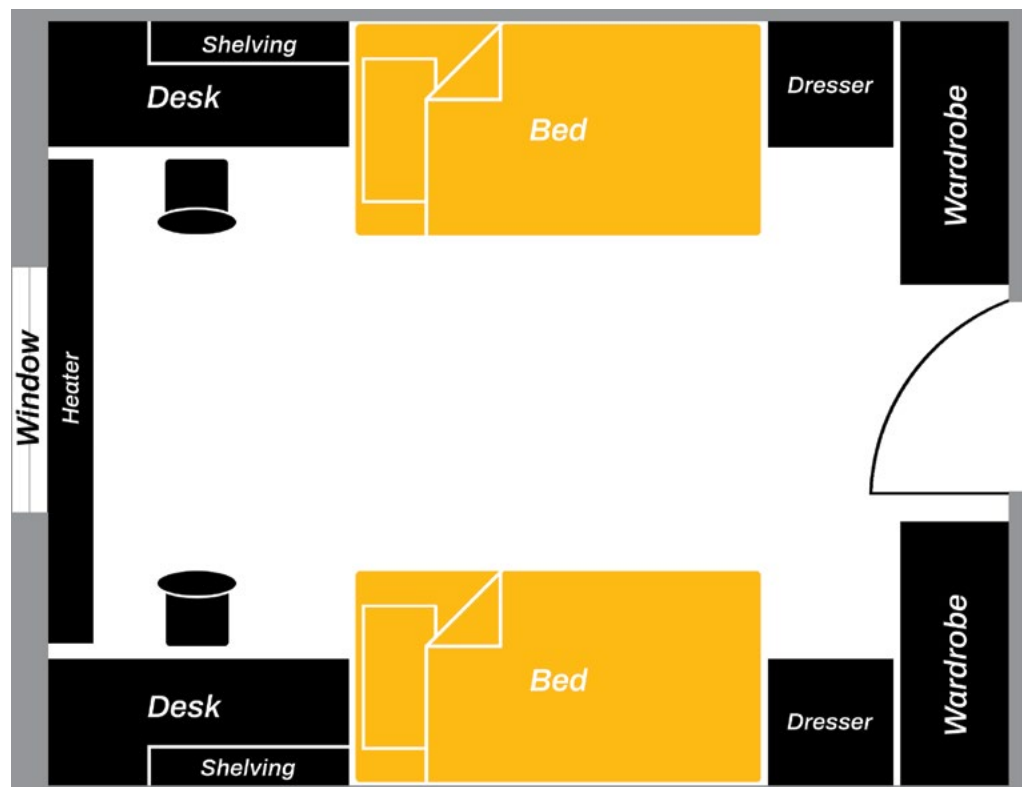
	Elmwood	South Hill	South Hill Vista
<b>Resident Type</b>	Sophomores & Above	Juniors, Seniors & Faculty/Staff	Families & Graduate Students
<b>Studio</b>	●		
<b>1 Bedroom</b>	●		
<b>Loft</b>	●		
<b>2 Bedrooms</b>		●	●
<b>3 Bedrooms</b>			●
<b>Bathrooms</b>	1-2	1	1
<b>Wifi</b>	Included	Included	Included
<b>Laundry Hookups</b>		●	●
<b>Family-Friendly</b>		●	●
<b>Close to Day Care</b>		●	●

# 1. Theophilus Tower

## THE FIRST-YEAR STUDENT EXPERIENCE

A popular choice for first-year students, the iconic Tower provides social and academic support to students transitioning from high school to college. With eleven stories, residents will never have to go very far to find a place to study or hang out with friends.

All rooms feature a twin XL bed and a mini fridge/microwave combo unit.



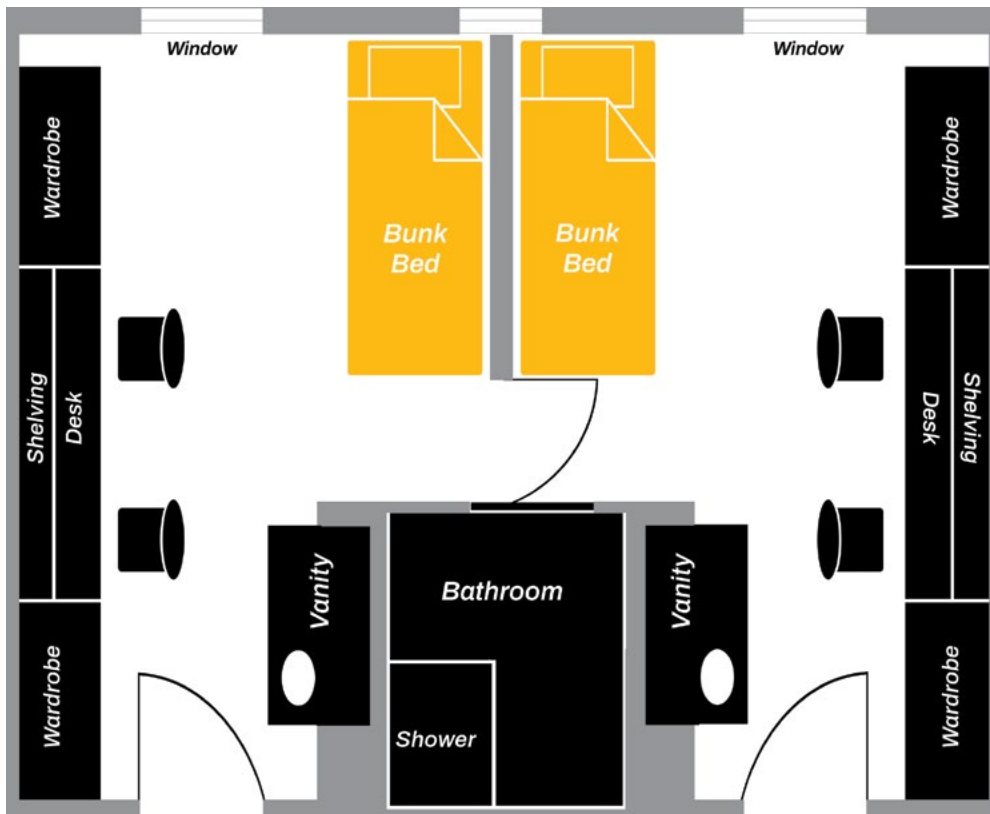


## 2. Wallace Residence Center

### SOMETHING FOR EVERYONE

Home to both first-year and non-first year students, Wallace houses both the Student Success Program and our main dining center, The Eatery. Wallace features suite-style living arrangements with an individual bathroom for suite-mates.

All rooms feature a twin XL bed and a mini fridge/microwave combo unit.

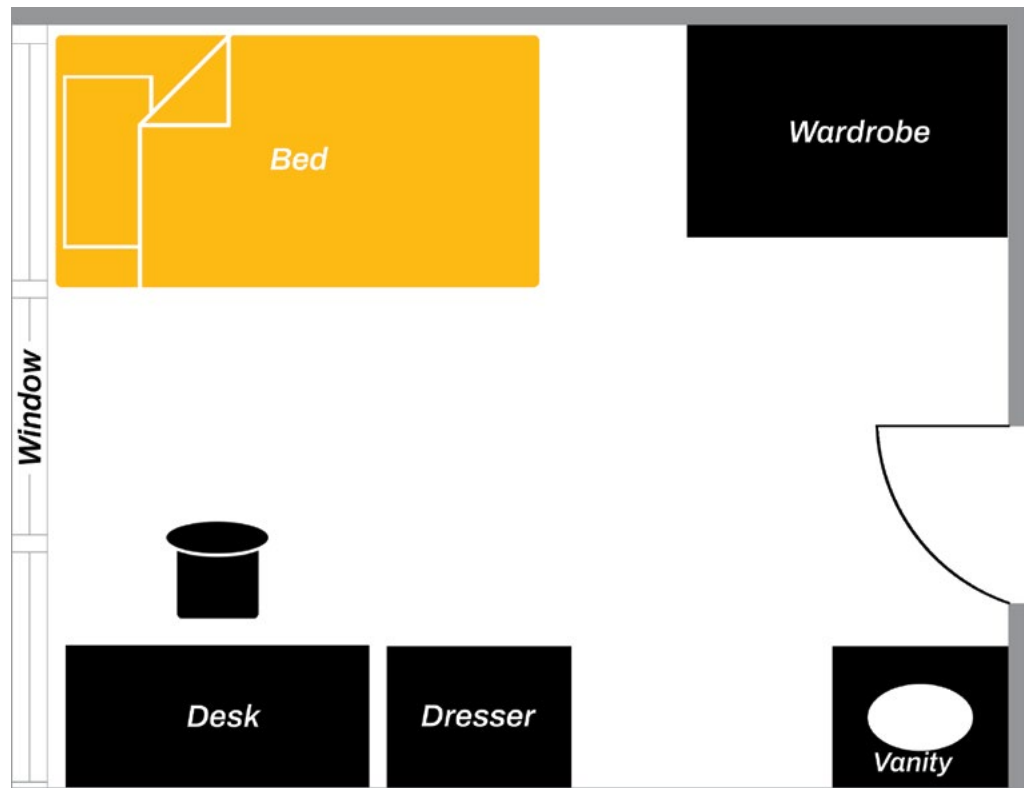


# 3. McConnell Hall

## INDEPENDENT LIVING

With its single-room layouts, McConnell is perfect for students wanting a more private and academically-focused living environment. Reserved for returning students, this residence hall offers a unique living environment that is more intimate than other halls while still featuring a friendly and vibrant community.

All rooms feature a twin XL bed and a mini fridge/microwave combo unit.





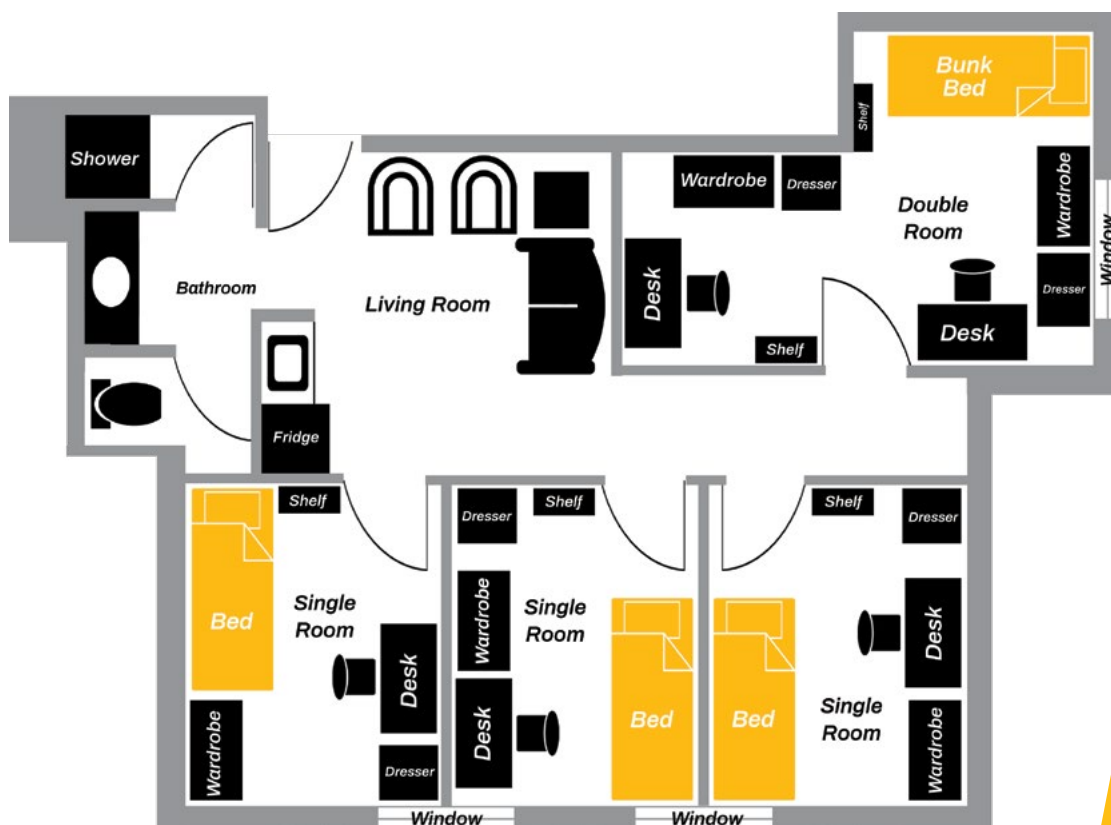


## 4 Living Learning Communities

### COMBINING THE BEST OF ACADEMIC AND SOCIAL LIVING

The Living Learning Communities are comprised of eight individual buildings. Each building provides academic success, student support and lively social activities. Though generally popular with returning residents, the LLCs are also an option for first-year students.

All suites feature twin XL beds and a full size refrigerator and microwave.



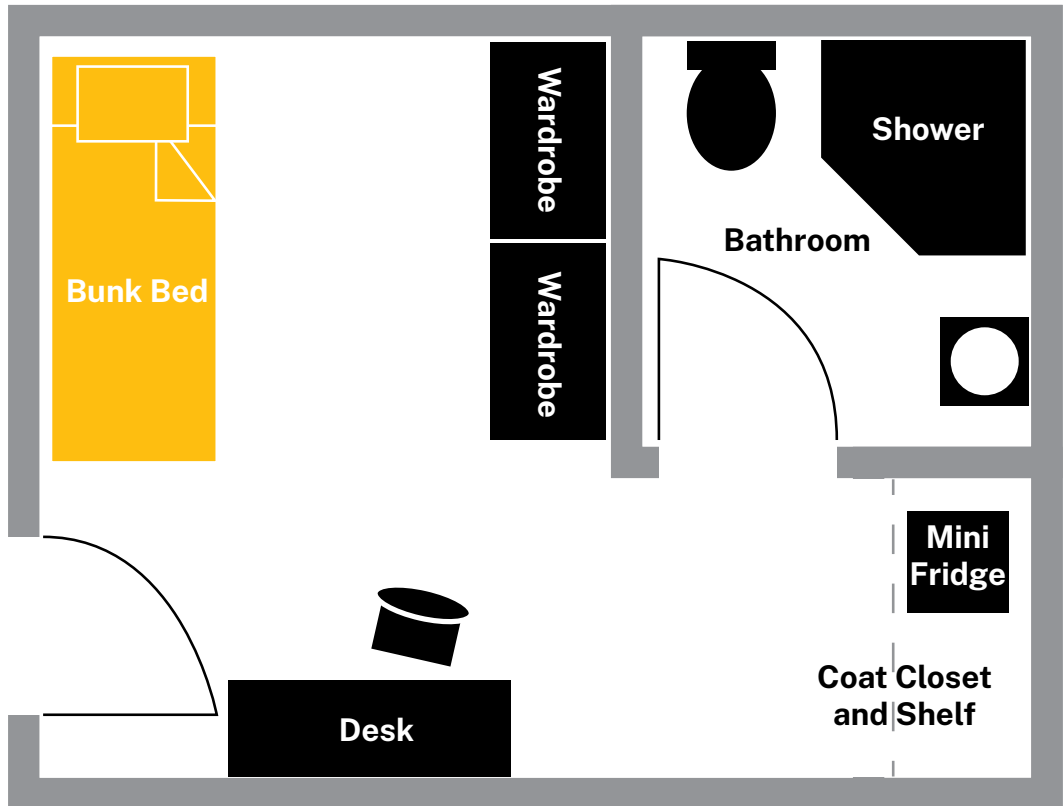


## 5. North Campus Communities

### RETURNING AND TRANSFER STUDENTS

Eligible students have the exciting opportunity to live in an affordable residence hall that also allows them to retain a level of independence. The city of Moscow and all it offers is right outside the door.

All rooms feature twin XL bunk beds, a mini fridge, microwave and an accessible parking lot.

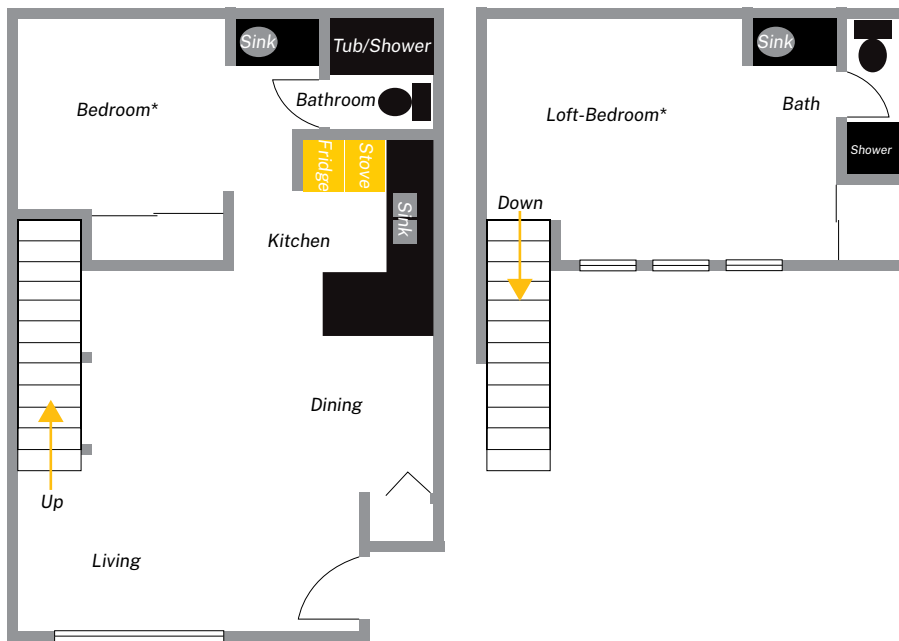


# UNIVERSITY APARTMENTS

The University of Idaho owns and operates three on-campus apartment complexes located on the east side of campus. Designed to fit the various living needs of students, the apartments cater to graduate students, upper-level students and students with families. The apartment rates include water, sewer and garbage services as well as highspeed internet access.

## 6. Elmwood Apartments

Elmwood Apartments offer studio, one-bedroom and loft-style apartments. The apartments are located on Elm Street, in the heart of campus near the Bruce M. Pitman Center, engineering buildings and the VandalStore. While there are no laundry facilities located in the Elmwood Apartments, residents can utilize a local landromat.



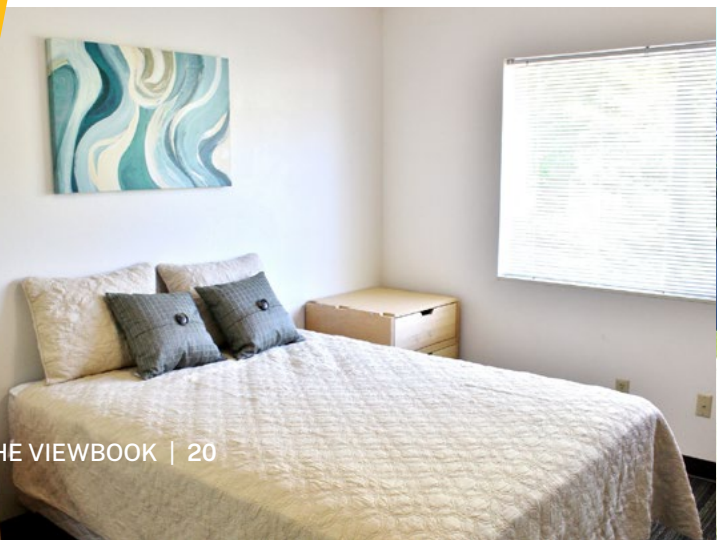
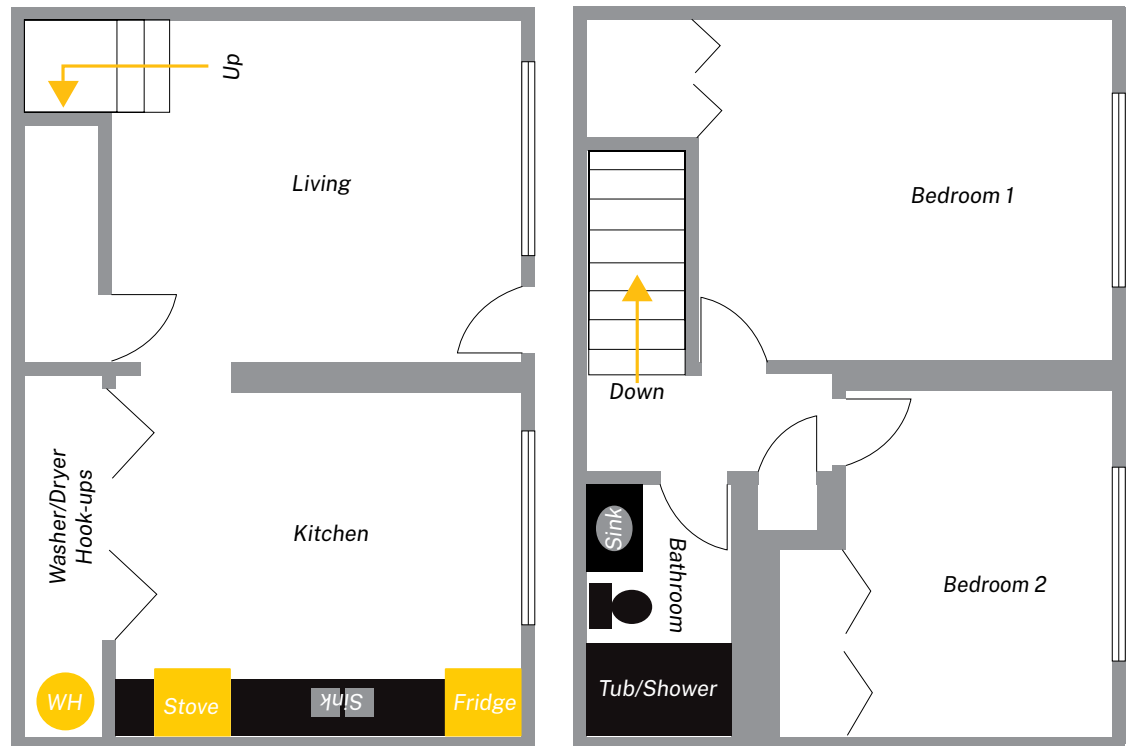
\*Bedroom windows and doors vary from unit to unit.



# 7 • South Hill Apartments

GREAT FOR GRADUATE STUDENTS

The South Hill Apartments offer two-bedroom, townhouse-style units. The apartments are located on Taylor Avenue. Electric hookups are available for washer and dryers.





# 8. South Hill Vista

PERFECT FOR FAMILIES

The South Hill Vista Apartments offer two and three-bedroom townhouse-style units. The apartments are located on Taylor and Sweet Avenue which is close to the Early Childhood Learning Center. Electric hookups are available for washer and dryers. All units also feature a back patio and storage closet.



# Graduate Students and Students with Families

The university apartments offer wonderful environments suited for graduate students and students with children.

**The university apartments are perfect for graduate students, students with families and other non-traditional students.**

The Housing and Residents Life staff strives to provide a warm, diverse community where every student can thrive. The staff is committed to working with residents to encourage the development of interactive and supportive communities.

## STUDENT STAFF

The on-campus apartments feature an on-call Apartment Community Assistant (ACA) who is responsible for the general administration, development and implementation of student life in the apartment communities. Each month there is a new activity that helps promote a sense of community and connection between apartment residents.





# Parking and Transportation Services

Located on the Moscow campus, inside the International Transit Center at 1006 Railroad St., the Parking and Transportation Services office is open to both the Vandal community and the general public.

## Vandal Break Bus

Parking and Transportation Services charts buses to transport students to designated cities in southern and eastern Idaho for academic breaks, for a nominal fee.

Vandal Break Buses run for all three academic breaks including Fall, Winter and Spring Break. Buses leave Moscow the Saturday after classes finish and return the Sunday before classes resume.

### BOISE ROUTE OPTIONS

New Meadows, Weiser, Payette, Caldwell, Nampa, Meridian and Boise.

### IDAHO FALLS ROUTE OPTIONS

Mountain Home, Bliss, Twin Falls, Burley, Pocatello/Chubbuck, Blackfoot and Idaho Falls.

### Vandal Break Bus



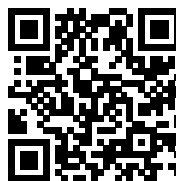
[uidaho.eud/breakbus](http://uidaho.eud/breakbus)

## Parking Permits

Overseeing a diverse community of more than 12,000 students, faculty and staff. The University of Idaho's Parking and Transportation Services team provides a full range of parking and transportation services.

A parking permit will be available for each student who chooses to bring a personal vehicle to campus. Availability of a specific permit type or parking location is not guaranteed. Students are encouraged to purchase their permit early to ensure they are able to park at their desired on-campus locations.

### Parking Permits



[uidaho.edu/parking](http://uidaho.edu/parking)

# Dining

Idaho Eats, the university campus dining services, is dedicated to offering the Vandal community top-tier food and service at an excellent value.

Idaho Eats is committed to offering quality, creative and innovative food for on-campus students. First-year students living in the residence halls, and all students living in Wallace, Theophilus and McConnell must have a Residential Meal Plan. Plans are selected during the housing application process.

## About Idaho Eats

### Dietary Accommodations

Whether it's a dietary restriction or a preference, Idaho Eats strives to accommodate all dietary needs and requests. We provide a daily rotation of vegan and vegetarian meal selections and avoid gluten options at our food stations in the dining hall. We also offer a dedicated allergen-friendly station that serves dishes made avoiding the top nine allergens, including gluten. Students who require a specific diet should complete the Dietary Accommodation Form to arrange a one-on-one consultation.

### Boost Mobile Ordering

In a rush and can't wait in line? The Boost Mobile Ordering app has students covered. The Boost Mobile app allows students to order ahead and skip the line at select on-campus locations, including for Gold Meals. The app links directly to residents meal plans for payment, so using your meal plan is as easy as the tap of a button. Boost accepts credit, debit and dining dollars.

### Starship Delivery

The dedicated fleet of Starship Delivery robots are here to bring meals to students anywhere on the Moscow campus. Starship accepts credit, debit and dining dollars.

### Dining Dollars

Dining dollars operate similarly to a debit card. Dining dollars provide the flexibility to eat at a variety of campus dining locations, including Chick-fil-A, True Burger, The Market and more. Any remaining dining dollar balances from fall will roll over to spring, and any remaining balance will expire at the end of the spring semester.

### Gold Meals

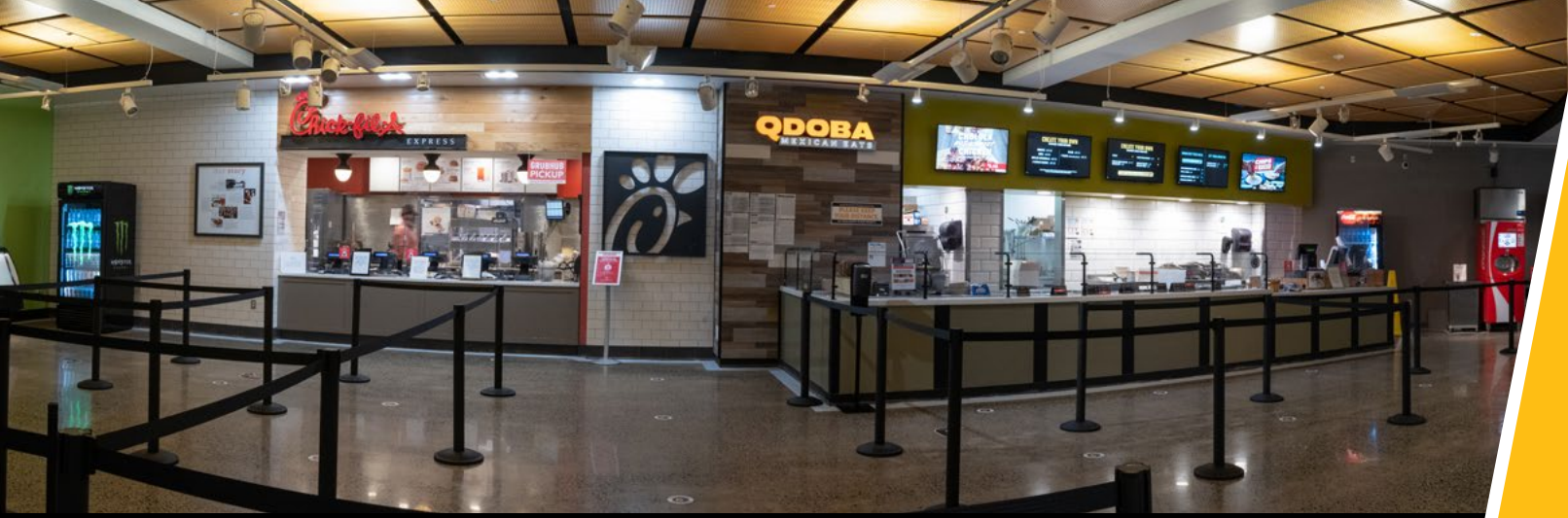
Gold meals allow students to use a select number of their meal swipes per week at other Idaho Eats dining locations outside of The Eatery, like Einstein Bros. Bagels, Qdoba and other retail locations on the Moscow campus for a pre-set meal. For each gold meal used, one meal swipe will be deducted from the meal plan for the week.

### Meal Swipes

Each residential meal plan comes with a set number of weekly meals at The Eatery. A single swipe equals one entry into The Eatery for a meal. Meal swipes reset at the end of each week and do not roll over week-to-week.







# Residential Meal Plans

The Idaho Experience

Joe's Choice

Vandal Fuel

Social Plate

<b>Number of Meal Swipes</b>	<b>Unlimited</b>	<b>14 per week</b>	<b>8 per week</b>	<b>3 per week</b>
<b>Dining Dollars</b>	<b>225 Dining Dollars</b>	<b>325 Dining Dollars</b>	<b>425 Dining Dollars</b>	<b>450 Dining Dollars</b>
<b>Gold Meals</b>	<b>4 per week</b>	<b>3 per week</b>	<b>2 per week</b>	<b>1 per week</b>
<b>Satisfies Meal Plan Requirement</b>	<b>Yes</b>	<b>Yes</b>	<b>Yes</b>	<b>Available to non-first year residents</b>

## About Your Meal Plan

Meal plans are linked to student accounts through their VandalCard. To access the meal plan, students can swipe their VandalCard at any dining location.

## Community Meal Plans

Idaho Eats offers additional community meal plan options in addition to the residential meal plans for off-campus students.

More information about meal plans, hours of operation, dining locations and more can be found on the Idaho Eats website: [uidaho.edu/dining](http://uidaho.edu/dining)

# Campus Services

University of Idaho students are supported by a vast network of people, resources and services.

## The Lookout

The University of Idaho's newest dining attraction, The Lookout, is located on the Vandal Golf Course. Open year-round, it boasts beautiful views and an upscale American menu. Check out the menu at: [uilookout.com](http://uilookout.com)

## Vandal Golf Course

Nestled among the rolling hills of the Palouse sits the historic Vandal Golf Course. Originally designed by Francis L. James and constructed in 1936, the Vandal Golf Course boasts a rich history and stunning scenery.

Panoramic vistas and the University of Idaho Arboretum and Botanical Garden create a backdrop that changes with the seasons from emerald green to amber gold.

## GOLFING SIMULATOR

Just because the weather turns, doesn't mean the fun has to end. Book a time to use the Indoor Golfing Simulator. Available year-round.

## Thomas Hammer

Located in the VandalStore, Thomas Hammer is there for all your caffeine needs.





## Cultural Events and Ticketing

The Cultural Events teams oversees the booking, ticketing, facilities and even stage management of concerts, performances, theatre productions and dance events at the University of Idaho. Overseeing the use of the Kibbie Dome, ICCU Arena, theaters and multiple event areas, Cultural Events bring some of the largest and most engaging productions to campus and the Palouse community.

## VandalStore

The VandalStore houses the largest selection of Vandal Gear and university merchandise on the planet. The VandalStore, is dedicated to the entire Vandal Family; students, alumni and staff/faculty.

Every dollar spent stays within the university to enhance and provide various services

for students; such as student scholarships, student employment opportunities and campus organizations.

## 24/7 Information Desk

Located on the first floor of LLC Building 2, the Information Desk provides students a centralized location to pick up mail, ask questions or get assistance when locked out of their room. All student mail goes through the Information Desk with students receiving an email notification that mail has arrived for them to pick up.

*Auxiliary Services also operates campus mail, concessions, summer conferences and the administration of multi-use facilities, including the Kibbie Dome, ICCU Arena and Pitman Center.*





# NEXT STEPS

1

## EXPLORE

- Visit [uidaho.edu/housing](https://uidaho.edu/housing)
- Learn about housing options
- Choose a community
- Learn about the meal plan options at [uidaho.edu/dining](https://uidaho.edu/dining)

Apply for Housing



[iwanthousing.uidaho.edu/](https://iwanthousing.uidaho.edu/)

**WE ARE HERE  
TO HELP**

**208-885-6571**

**[housing@uidaho.edu](mailto:housing@uidaho.edu)**



2

## APPLY

### PHASE ONE

- Go to [iwanthousing.uidaho.edu](https://iwanthousing.uidaho.edu)
- Start the application
- Pay the non-refundable \$100 application fee

### PHASE TWO

- Return to the housing application
- Sign the Housing Agreement
- Choose a building, room and roommate
- Select a meal plan

3

## WELCOME

- Meet your Roommate – After selecting a room
- Check out the “What to Bring” list at [uidaho.edu](https://uidaho.edu)
- Select a move-in timeslot through the application portal
- Follow us on Instagram and Facebook [@uidahohousing](https://www.instagram.com/uidahohousing)