



Idaho Science & Technology Policy Fellowship

The Idaho Science & Technology Policy Fellowship (ISTPF) is a nonpartisan program that connects science with policy by fostering a network of science, social science and engineering leaders who understand government and policymaking and are prepared to develop and implement solutions to address societal challenges.

This program provides opportunities for outstanding scientists, social scientists and engineers to learn firsthand about policymaking while using their knowledge and skills to address pressing challenges facing Idaho. Fellows support decision makers in Idaho, serving in yearlong assignments in executive branch agencies and the Legislative Services Office.

The ISTPF is a partnership among Boise State University, Idaho State University and the University of Idaho. The University of Idaho McClure Center for Public Policy Research serves as the lead. The ISTPF is guided by the ISTPF advisory board, which includes state agency directors and industry and academic leaders. The ISTPF is supported financially by grants, contracts and public and private contributions.

“The ISTPF provides a unique opportunity to keep Idaho talent and bring talent back to the state. As a host agency, we have benefitted tremendously from new perspectives and technical expertise these fellows bring. The fellows are helping to shape policy and their work will have lasting benefits for Idahoans.”

—Idaho Department of Environmental Quality

ISTPF Highlights

- One-year immersive public service experience. Fellows are matched with a host office in Idaho’s executive or legislative branch, with the potential for a second year in the executive branch.
- Five-day orientation bringing together local and national experts in science policy, government, law, communications and more.
- Monthly professional development seminars that encompass four areas of learning: policy and the state government, leadership, communication and networking and career strategies.
- Open to those who hold a doctoral level science or social science degree or a master’s in engineering and three years of work experience.

ISTPF Fellow Selection

- Applications open late January and close late March. Fellowship year begins late August.
- Fellowships are highly competitive, involving a merit review and selection process.
- Connection to Idaho preferred.

A Focus on ISTP Fellows

VERONIKA VAZHNIK, PH.D. (2020-21)

Background: Expert in energy and sustainability research with a Ph.D. in biorenewable systems.

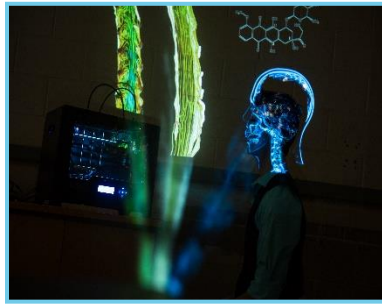
Host office: Governor's Office of Energy and Mineral Resources (OEMR)

Topic: Idaho's Energy Security Plan

Portfolio: Led an update to Idaho's Energy Security Plan—researched emerging threats to the energy supply, identified critical or vulnerable elements in Idaho's energy system and developed the state energy emergency decision tree. This included connecting with stakeholders and agencies within Idaho, in neighboring states and across the U.S. The fellow's background in energy research and experience working at Idaho National Laboratory helped her identify effective resiliency options for different energy sources that Idaho depends on.

"The ISTPF was crucial in building my understanding of resilience and energy system planning. In my current job, I can apply my experience with energy risks and resilience to resilience planning in other industries. At OEMR, I followed how the local utility developed an Integrated Resources Plan (IRP) and now, as a consultant, I am helping to develop such a plan for a nation in the Caribbean. I wouldn't be able to do such impactful work without the fellowship experience."

—Veronika Vazhnik, Ph.D.,
Sustainability Consultant



"The significance of my time as an ISTP fellow cannot be overstated. I'm able to bring what I've learned into my classroom to better prepare students, I'm pursuing new research based on the needs of the state and in collaboration with my host offices and I've helped develop a durable relationship between the university and state government. My current position at Boise State University has directly grown and benefited from this incredible experience."

—Jared Talley, Ph.D., Faculty, School of Public Service, Boise State University

JARED TALLEY, PH.D. (2021-22)

Background: Specialist in environmental governance in the Intermountain West with a Ph.D. in philosophy.

Host offices: Governor's Office of Species Conservation (OSC), Idaho STEM Action Center (STEM AC)

Topics: Collaborative conservation, salmon recovery and rural STEM education.

Portfolio: The fellow's work at OSC focused on organizing and strategizing internal collaborative efforts, as well as designing and implementing a statewide salmon recovery policy survey. Contributions to STEM AC focused on rural STEM education, centering around the organization of a statewide rural education collaborative.

Connect with the ISTPF

Email: istpf@uidaho.edu

Website: www.uidaho.edu/istpf

Phone: (208) 364-4549

 ISTPF

