

# EXTENSION TRENDS: **CANYON COUNTY**

University of Idaho Extension, Canyon County • [www.uidaho.edu/canyon](http://www.uidaho.edu/canyon)



## 2024 By the Numbers

- **17,596** direct contacts
- **8,804** youth participants
- **302** volunteers
- **4,206** volunteer hours
- **\$280,490** extramural funding

## Our Advisory Council

Special thanks to our volunteers who help shape programming and inform the work we do for UI Extension in Canyon County: Debbie Lowber, Maria Held and Julie Eldredge.

## UI Extension Educators



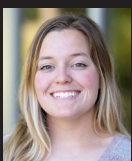
**Tasha Howard**  
208-459-6003  
[thoward@uidaho.edu](mailto:thoward@uidaho.edu)



**Jemila Chellappa**  
208-459-6003  
[jemila@uidaho.edu](mailto:jemila@uidaho.edu)



**Carrie Clarich**  
208-459-6003  
[carriej@uidaho.edu](mailto:carriej@uidaho.edu)



**Cheyenne Myers**  
208-459-6003  
[cheyannem@uidaho.edu](mailto:cheyannem@uidaho.edu)



**Brad Stokes**  
208-459-6003  
[bstokes@uidaho.edu](mailto:bstokes@uidaho.edu)

## 2024 Impact

The Idaho Master Gardener and horticulture program in Canyon County has strong community partners including the Nampa Library, Caldwell Library, Middleton Library and Homedale Library, as well as several local county schools for outreach to youth.

In 2024, a 10-week pasture management class was held for community members. This class was geared toward small acreage landowners. They were taught how to properly take care of their land, water rights, grass growth and animal husbandry. Female ranchers we supported with a six-week program called Anne's Project. Annie's Project offers female ranchers/farmers skills about business risk management and economics.

Over the last year, family and consumer sciences programming in Canyon County has focused on health in three major areas: physical, mental and social. The Diabetes Prevention Program was offered, aimed at community members who have a diagnosis of type 2 diabetes, or who are at risk for type 2 diabetes. Coping skills workshops were offered for both adults and youth to address mental health. To support the social aspect of health, Dementia Friends was offered to support those who may come in contact with, live with, or work alongside someone who has dementia.

## 4-H in Canyon County

UI Extension, Canyon County offers traditional 4-H programming as well as a series of spring and summer day camps, Short Term Enrollment Programs (STEP), in-school programs, afterschool programs and community events. With over 640 youth members in 44 clubs, Canyon County 4-H is home to one of the largest 4-H community club programs in Idaho. Youth participate in projects ranging from livestock, pets, foods and nutrition, leadership, art, shooting sports, and more. Spring and summer day camps are hosted through the UI Extension, Canyon County office and held at a variety of sites in the county and on a variety of topics.

Throughout the year, 4-H educators provide outreach to in-school and afterschool programs. To address the impacts of social, emotional and educational needs of youth, 4-H educators wrote and received an Idaho Out-of-School Network grant for the school year. This allowed for the continuation of an afterschool program started with ARPA funding. The Junior Master Gardener team provides programs on a variety of horticulture topics throughout the year at the UI Extension, Canyon County office and at numerous community partner locations.

## On the Horizon

In 2025, the UI Extension, Canyon County office will be promoting and investigating the impact of integrated crop-livestock systems in southwest Idaho and developing region-specific resources to support local producers and stakeholders. Key efforts will include enhancing the statewide pest alert network, as well as focusing on soil health, fertility, nutrient management and integrated pest management practices. Work will also emphasize integrated crop-livestock system management as a way to improve sustainability and productivity. Overall, the emphasis will be advancing conservation and sustainable agricultural practices tailored to the unique needs of southwest Idaho's agricultural community.

Healthy aging programs will be brought to the county to meet the needs of an aging population. These will include classes and programs focused on financial, physical, and mental health. Horticulture and 4-H programming will continue to expand outreach of programs within the community.