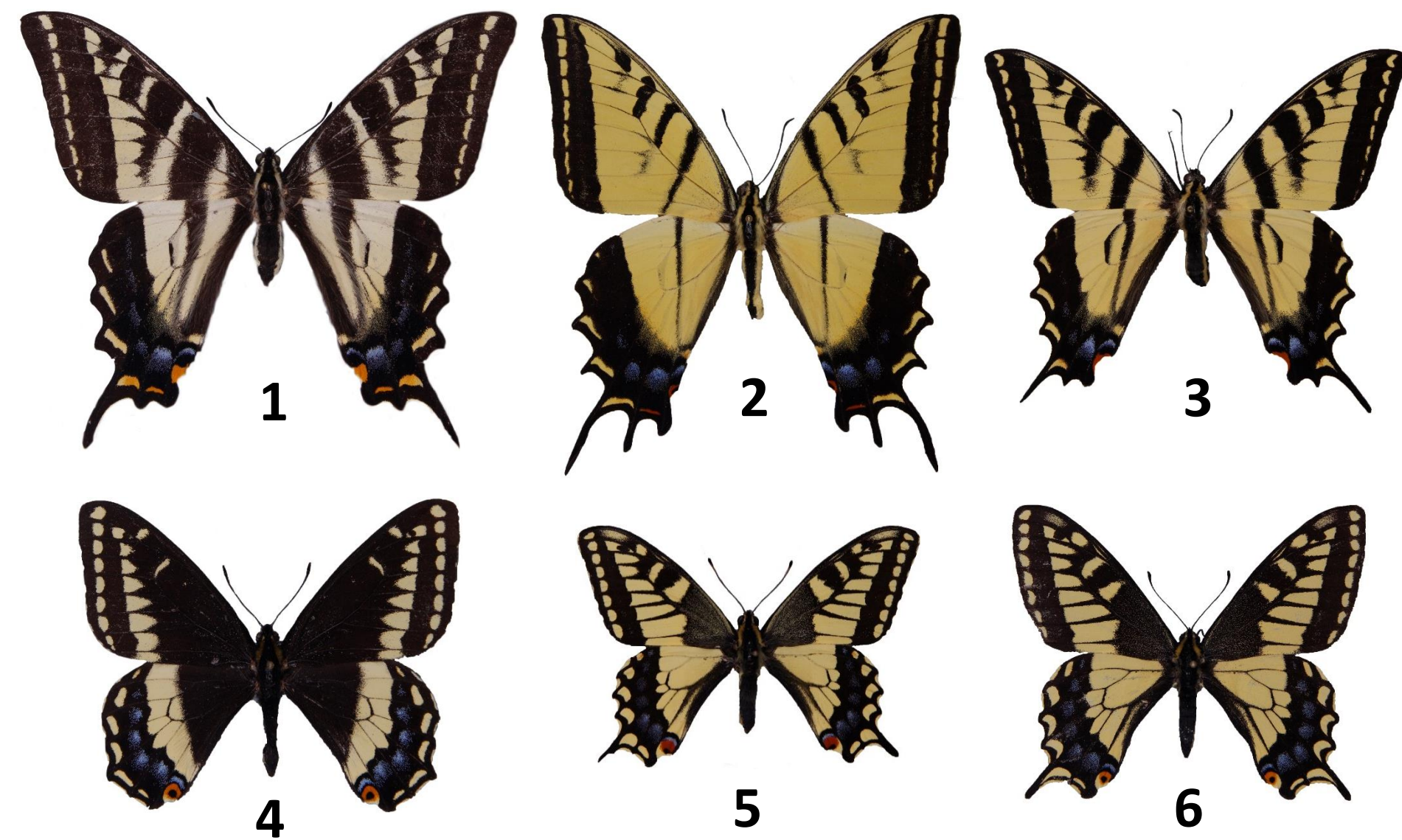


BUTTERFLIES OF IDAHO

PAPILIONIDAE (9 species)

Swallowtails

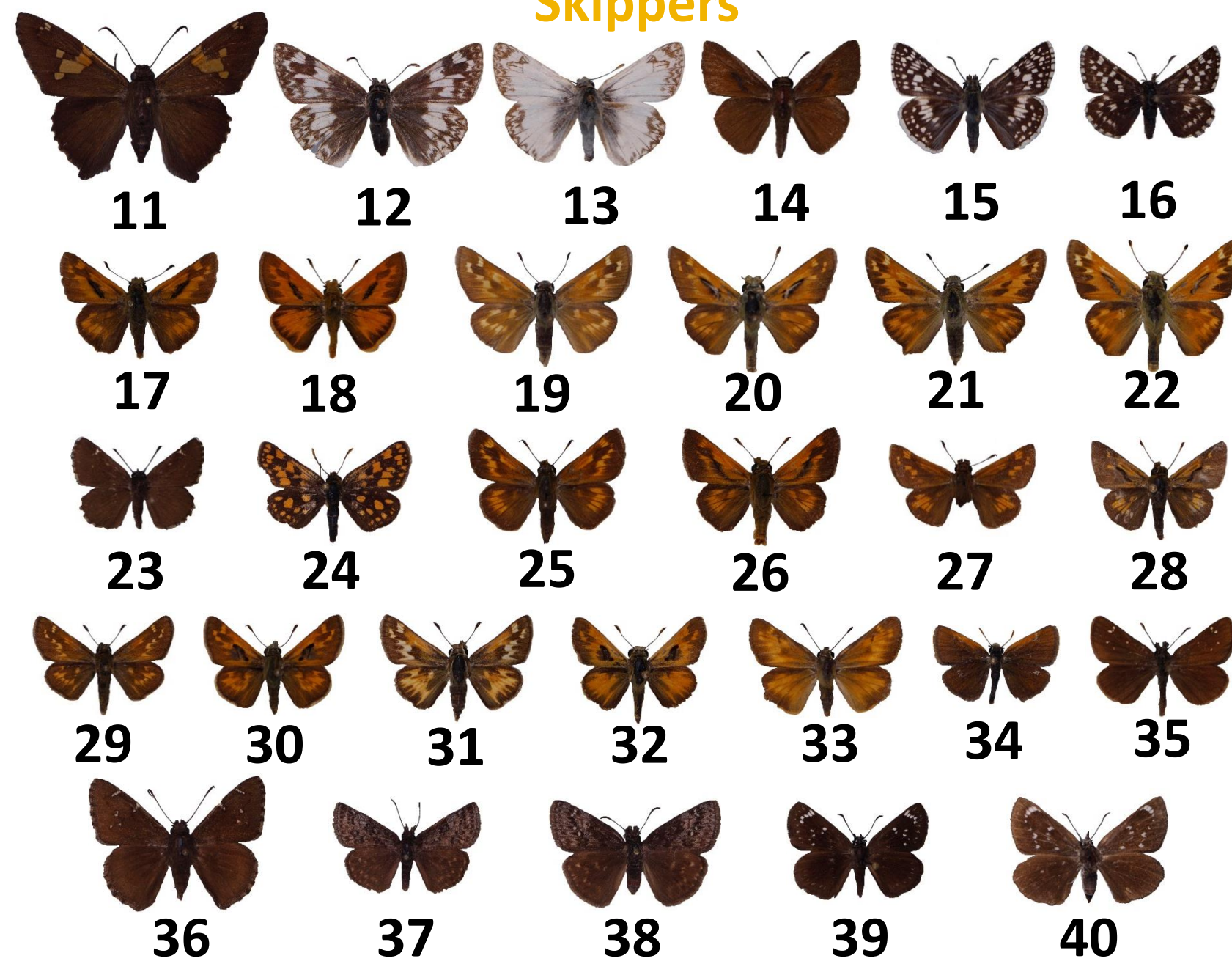


Parnassians



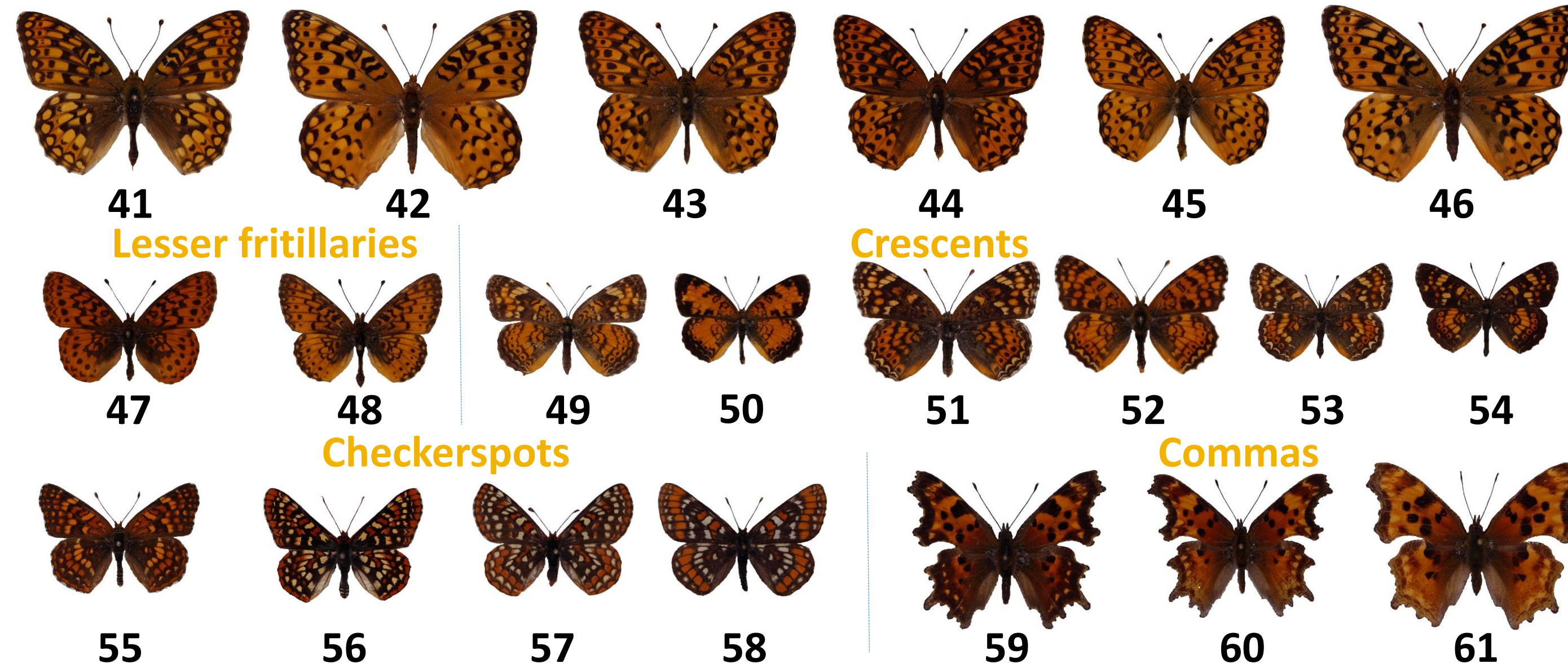
HESPERIIDAE (33 species)

Skippers



NYMPHALIDAE (58 species)

Fritillaries



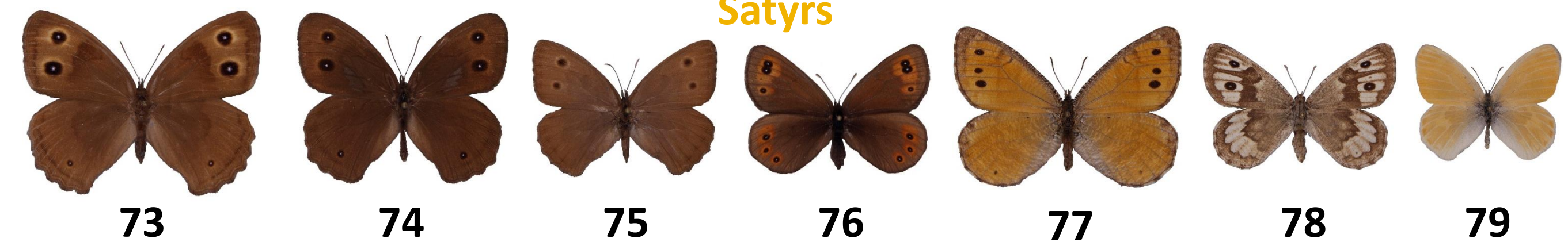
Tortoiseshells, Ladies and their relatives



Admirals, Viceroy, Monarch



Satyrs



PIERIDAE (21 species)

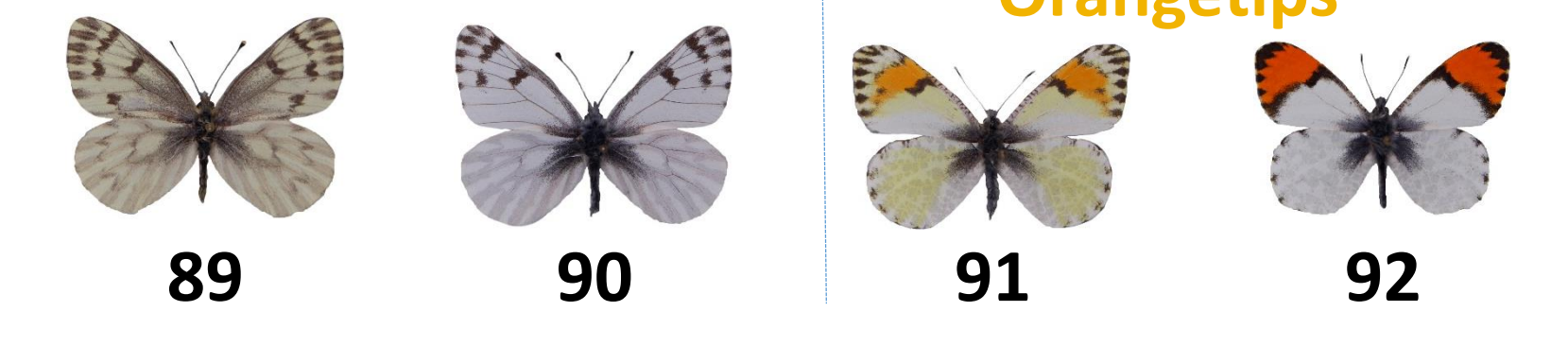
Whites



Orangetips



Marbles

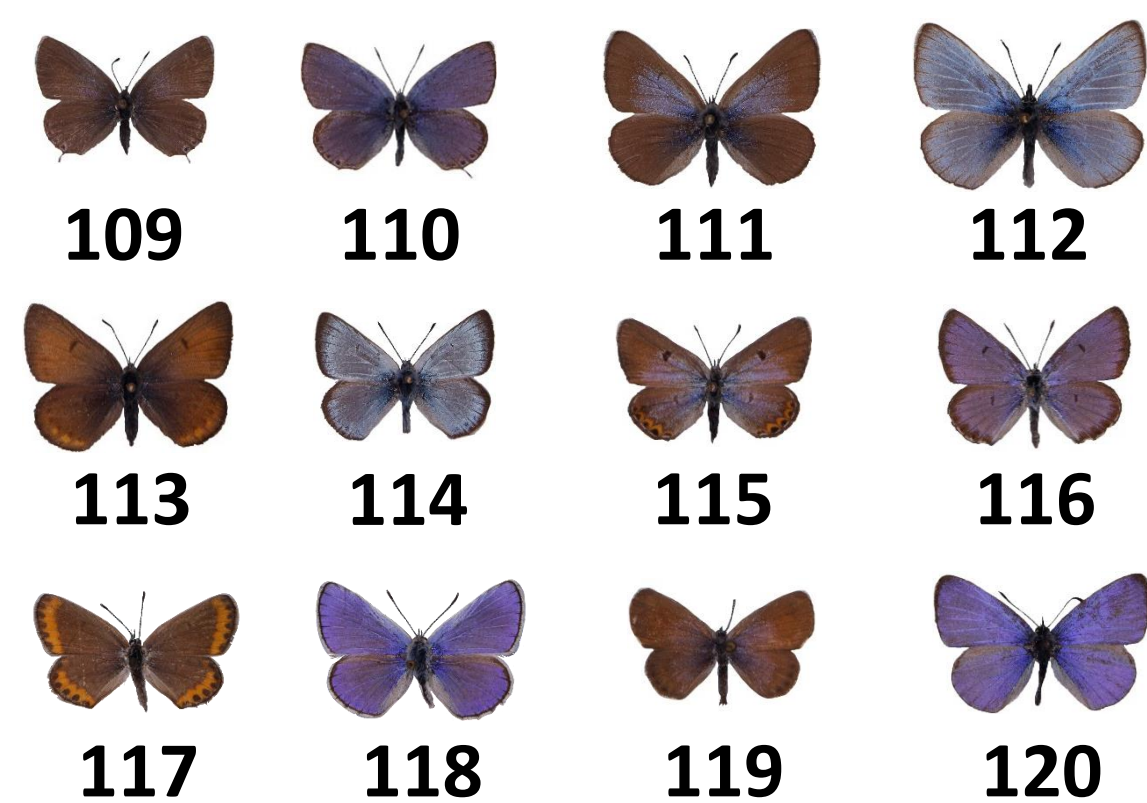


Sulphurs

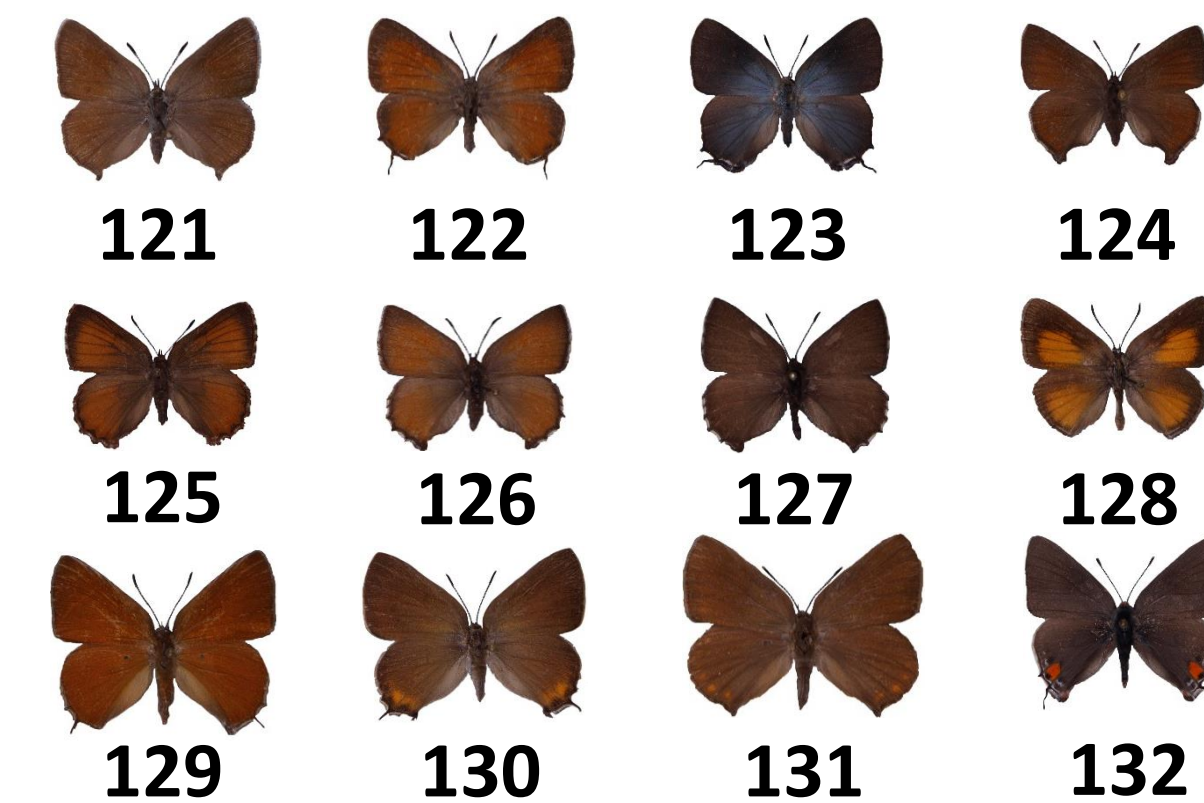


LYCAENIDAE (50 species)

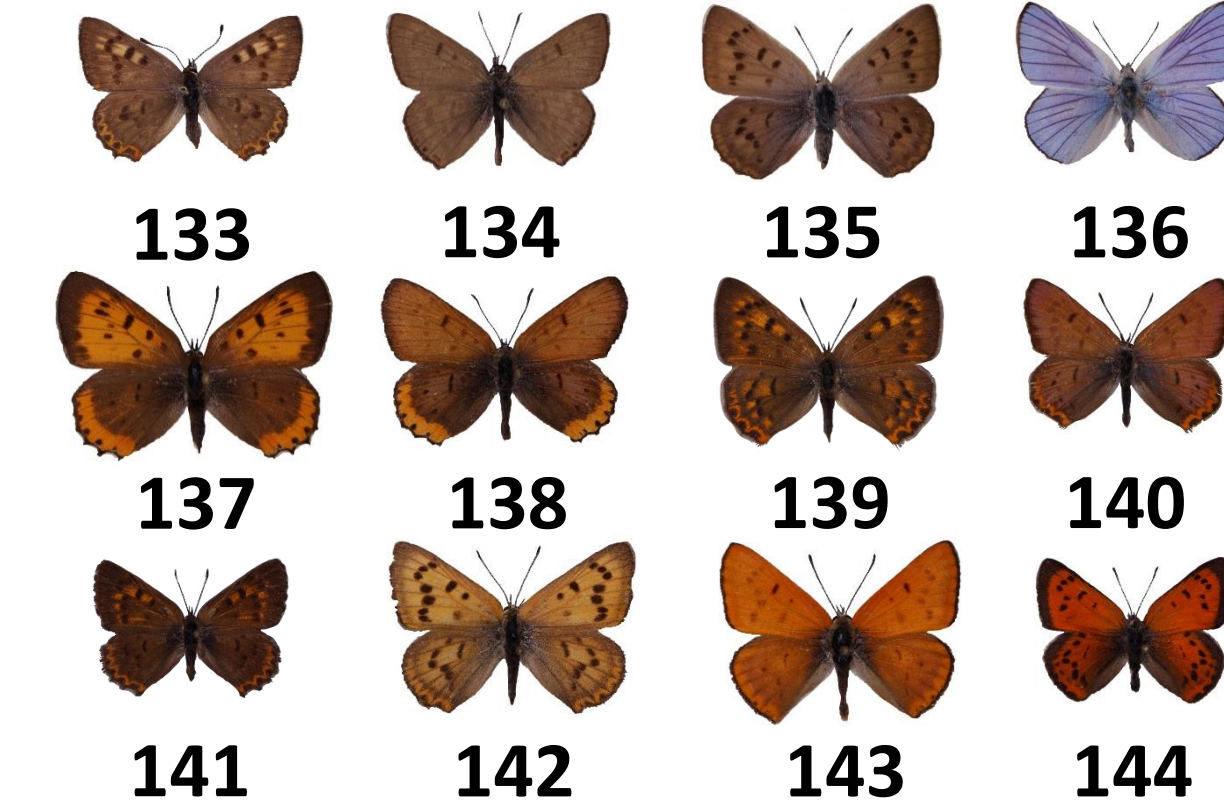
Blues and Azures



Hairstreaks and Elfins



Coppers



RIODINIDAE (1 species)

Metalmarks



5 cm
1 inch

©Copyright 2020 University of Idaho Barr Entomological Museum. Downloading, printing, sharing and distribution are allowed. Partial reproduction for non-commercial purposes allowed if original source is acknowledged. Unauthorized sale is strictly prohibited. This poster was compiled by Luc Leblanc (conception and production), Jon Shepard (specimen identification), Conn Evans (photography), and Ellie Hitchings (photo editing). All photographed specimens were collected by Nelson Curtis and are deposited at the William F. Barr Entomological Museum (University of Idaho, Moscow, ID).

1	Pale swallowtail (<i>Papilio eurymedon</i>)	46	Zerene fritillary (<i>Speyeria zerene</i>)	91-92	Sara's orangetip (<i>Anthocharis sara</i>) Fem, Mal
2	Two-tailed swallowtail (<i>Papilio multicaudata</i>)	47	Western meadow fritillary (<i>Boloria epithore</i>)	93-94	Large marble (<i>Euchloe ausonides</i>) Fem, Mal
3	Western tiger swallowtail (<i>Papilio rutulus</i>)	48	Silver-bordered fritillary (<i>Boloria selene</i>)	95-96	Desert marble (<i>Euchloe lotta</i>) Fem, Mal
4	Indra Swallowtail (<i>Papilio indra</i>)	49-50	Northern Crescent (<i>Phyciodes cocyta</i>) Fem, Mal	97-98	Clouded sulphur (<i>Colias philodice</i>) Fem, Mal
5	Old World swallowtail (<i>Papilio machaon</i>)	51-52	Pale crescent (<i>Phyciodes pallida</i>) Fem, Mal	99-100	Pink-edged sulphur (<i>Colias interior</i>) Fem, Mal
6	Anise swallowtail (<i>Papilio zelicaon</i>)	53-54	Field crescent (<i>Phyciodes pulchella</i>) Fem, Mal	101-102	Mead's sulphur (<i>Colias meadii</i>) Fem, Mal
7-8	Clodius apollo (<i>Parnassius clodius</i>) Fem, Mal	55	Northern checkerspot (<i>Chlosyne palla</i>)	103-104	Christina sulphur (<i>Colias christina</i>) Fem, Mal
9-10	Rocky Mountain apollo (<i>Parnassius smintheus</i>) Fem, Mal	56	Anicia checkerspot (<i>Euphydryas anicia</i>)	105-107	Orange sulphur (<i>Colias eurytheme</i>) Fem, Fem (variant), Mal
11	Silver-spotted skipper (<i>Epargyreus clarus</i>)	57	Edith's checkerspot (<i>Euphydryas editha</i>)	108	Dainty sulphur (<i>Nathalis iole</i>)
12-13	Large white skipper (<i>Heliopetes ericetorum</i>) Fem, Mal	58	Gillett's checkerspot (<i>Euphydryas gillettii</i>)	109-110	Western tailed blue (<i>Cupido amyntula</i>) Fem, Mal
14	Dun skipper (<i>Euphyes vestris</i>) Mal	59	Green comma (<i>Polygonia faunus</i>)	111-112	Silvery blue (<i>Glaucopsyche lygdamus</i>) Fem, Mal
15	Checkered skipper (<i>Pyrgus communis</i>)	60	Hoary comma (<i>Polygonia gracilis</i>)	113-114	Greenish blue (<i>Plebejus saepiolus</i>) Fem, Mal
16	Two-banded checkered skipper (<i>Pyrgus ruralis</i>)	61	Satyr anglewing (<i>Polygonia satyrus</i>)	115-116	Shasta blue (<i>Plebejus shasta</i>) Fem, Mal
17-18	Woodland skipper (<i>Ochlodes sylvanoides</i>) Fem, Mal	62	Compton tortoiseshell (<i>Nymphalis vaualbum</i>)	117-118	Melissa's blue (<i>Plebejus melissa</i>) Fem, Mal
19-20	Western branded skipper (<i>Hesperia colorado</i>) Fem, Mal	63	Milbert's tortoiseshell (<i>Aglais milberti</i>)	119	Western pygmy-blue (<i>Brephidium exilis</i>)
21-22	Juba skipper (<i>Hesperia juba</i>) Fem, Mal	64	Mourning cloak (<i>Nymphalis antiopa</i>)	120	Western spring azure (<i>Celastrina echo</i>) Mal
23	Roadside skipper (<i>Amblyscirtes vialis</i>)	65	Red admiral (<i>Vanessa atalanta</i>)	121	Immaculate green hairstreak (<i>Callophrys affinis</i>)
24	Arctic skipper (<i>Carterocephalus palaemon</i>)	66	West coast lady (<i>Vanessa annabella</i>)	122	Juniper hairstreak (<i>Callophrys gryneus</i>)
25-26	Long Dash skipper (<i>Polites mystic</i>) Fem, Mal	67	American lady (<i>Vanessa virginiensis</i>)	123	Thicket hairstreak (<i>Callophrys spinetorum</i>)
27-28	Peck's skipper (<i>Polites peckius</i>) Fem, Mal	68	Lorquin's admiral (<i>Limenitis lorquini</i>)	124	Brown elfin (<i>Callophrys augustinus</i>)
29-30	Draco skipper (<i>Polites draco</i>) Fem, Mal	69	Weidemeyer's admiral (<i>Limenitis weidemeyerii</i>)	125	Western pine elfin (<i>Callophrys eryphon</i>) Fem
31-32	Sandhill skipper (<i>Polites sabuleti</i>) Fem, Mal	70	Viceroy (<i>Limenitis archippus</i>)	126-127	Moss' elfin (<i>Callophrys mossi</i>) Fem, Mal
33	Taxiles skipper (<i>Poanes taxiles</i>)	71-72	Monarch (<i>Danaus plexippus</i>) Fem, Mal	128	Behr's hairstreak (<i>Satyrium behrii</i>)
34	Garita skipperling (<i>Oarisma garita</i>)	73-74	Common woodnymph (<i>Cercyonis pegala</i>) Fem, Mal	129	Hedgerow hairstreak (<i>Satyrium saepium</i>)
35	Russet skipperling (<i>Piruna pirus</i>)	75	Small woodnymph (<i>Cercyonis oetus</i>)	130	Sylvan hairstreak (<i>Satyrium sylvinus</i>)
36	Northern cloudywing (<i>Thorybes pylades</i>)	76	Common alpine (<i>Erebia epipsodea</i>)	131	Coral hairstreak (<i>Satyrium titus</i>)
37	Dreamy duskywing (<i>Erynnis icelus</i>)	77	Chryxus arctic (<i>Oeneis chryxus</i>)	132	Gray hairstreak (<i>Strymon melinus</i>)
38	Persius duskywing (<i>Erynnis persius</i>)	78	Ridings' Satyr (<i>Neominois ridingsii</i>)	133-134	Edith's copper (<i>Lycaena editha</i>) Fem, Mal
39	Common sootywing (<i>Pholisora catullus</i>)	79	Common ringlet (<i>Coenonympha tullia</i>)	135-136	Blue copper (<i>Lycaena heteronea</i>) Fem, Mal
40	Mohave sootywing (<i>Hesperopsis libya</i>) Fem	80-81	Cabbage white (<i>Pieris rapae</i>) Fem, Mal	137-138	Bronze copper (<i>Lycaena hyllus</i>) Fem, Mal
41	Callipe fritillary (<i>Speyeria callipe</i>)	82-83	Margined white (<i>Pieris marginalis</i>) Fem, Mal	139-140	Lilac-bordered copper (<i>Lycaena nivalis</i>) Fem, Mal
42	Coronis fritillary (<i>Speyeria coronis</i>)	84	Pine white (<i>Neophasia menapia</i>) Fem, Mal	141	Reakirt's copper (<i>Lycaena mariposa</i>)
43	Great Basin fritillary (<i>Speyeria egleis</i>)	85-86	Western white (<i>Pontia occidentalis</i>) Fem, Mal	142-143	Ruddy copper (<i>Lycaena rubidus</i>) Fem, Mal
44	Hydaspe fritillary (<i>Speyeria hydaspe</i>)	87-88	Becker's white (<i>Pontia beckerii</i>) Fem, Mal	144	Lustrous copper (<i>Lycaena cupreus</i>) Mal
45	Mormon fritillary (<i>Speyeria mormonia</i>)	89-90	Spring white (<i>Pontia sisymbrii</i>) Fem, Mal	145	Mormon metalmark (<i>Apodemia mormo</i>)